



PC-4000

Digital Panoramic Imaging System



PC-4000 Digital Panoramic Imaging System

Simple Design. Simple to Use. Simply Fantastic Images.

Panoramic Corporation has long been recognized for developing products designed with enduring performance at an unparalleled value. Carrying on the brand tradition, the PC-4000 combines a legacy of proven reliability with cutting edge digital technology. From its Cadmium Telluride (CdTe) sensor technology to the integrated X-ray generator, the PC-4000 brings impressive value and superior results. The PC-4000 is easier to use, more reliable and more easily maintained than many other machines in its class.



Reviewed by a peer-to-peer evaluation team, the PC-4000 was awarded BEST PRODUCT by Dental Product Shopper Magazine.



Technology

The advanced PC-4000 sensor technology creates vibrant digital imaging quality featuring EV Clarity, a unique one-click tool which easily eliminates spinal column distortion. The PC-4000 image set also combines diagnostic volume where X-rays are not converted to light; therefore, no blurring occurs and image clarity and contrast are increased up to 300%.

Blurred images, caused by mis-positioned patients or specific anatomical features that are difficult to diagnose using conventional panoramic systems, can now be easily resolved without additional exposure using PC-4000 autofocus or manual focus features.

Ease of Use

Patient positioning and machine operation are made easy for staff with simplistic techniques and tools. Touch pad controls guide the clinician through the operational procedures, while user-friendly software features provide straightforward image enhancement.

Customer Care

Panoramic has built a legacy of not only providing but also supporting our customers' panoramic radiography needs. Our goal is to extend services and tools that enhance the customer experience around our products known for performance, reliability, and value.

PC-4000 Digital Panoramic Imaging System

The Cadmium Telluride (CdTe) sensor technology is more efficient because it minimizes light distortion by directly converting X-ray energy into electronic digital output. As a result, image clarity and contrast are improved up to 300%. In addition, the CdTe sensor produces over 300 image frames per second to produce a multi-layered panoramic image of unparalleled quality and clarity. This depth of image data allows selective enhancement of the different layers. As a result, poor patient positioning or unclear anatomical landmarks can be easily resolved.

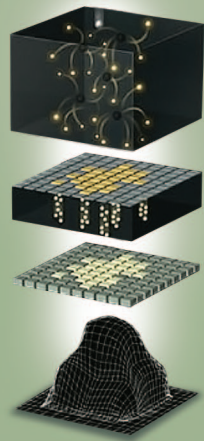
Conventional CCD/CMOS

Scintillator
(X-ray is converted to light)

Photodiode
(Light is converted to electrical signals)

Electric circuit

Image



Panoramic CdTe

CdTe
(X-ray is converted to electrical signals)

Electric circuit

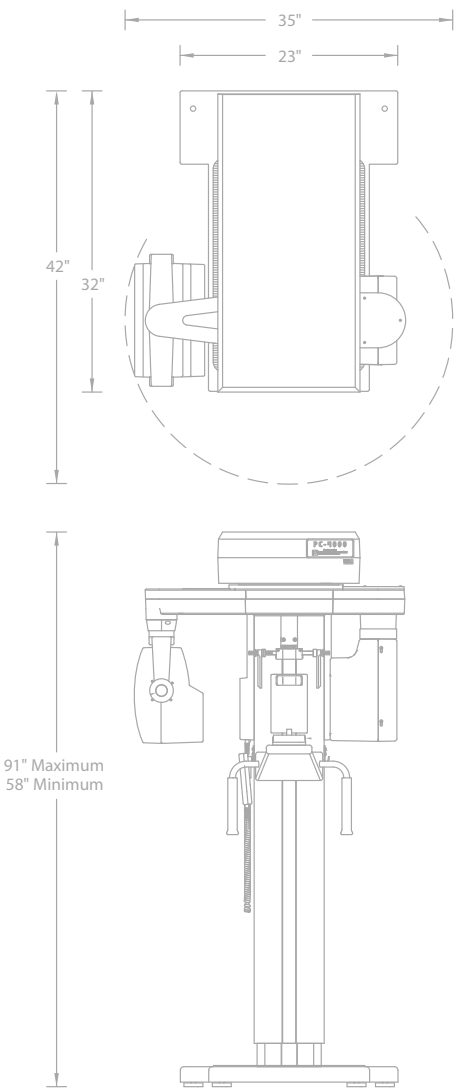
Image



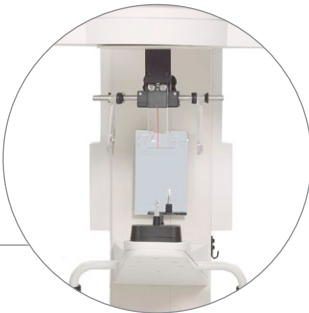
With Panoramic CdTe technology X-rays are not converted to light; therefore, no blurring occurs increasing clarity and contrast.

Specifications

- Completely Free Standing
- Recommended Minimum Working Space: 48" x 48"
- Focal Spot: 0.5mm x 0.5mm
- Focal Trough:
 - Anterior Region - 12mm
 - Posterior Region - 41mm
- Rated kVp: 70-90
- Tube Current: 6 mA
- Power Requirements:
 - 115 V, 20 Amp Dedicated Service
- Exposure Time: 12 Seconds
- Image Size Captured:
 - 6" x 12" (PAN and TMJ)
- Resolution: 3200 x 1500 dpi
- Weight: 415 lbs.



The logical menu optimizes kVp settings with touch pad activation and LED display.



The fixed bite guide eliminates the guesswork for consistently precise patient positioning.



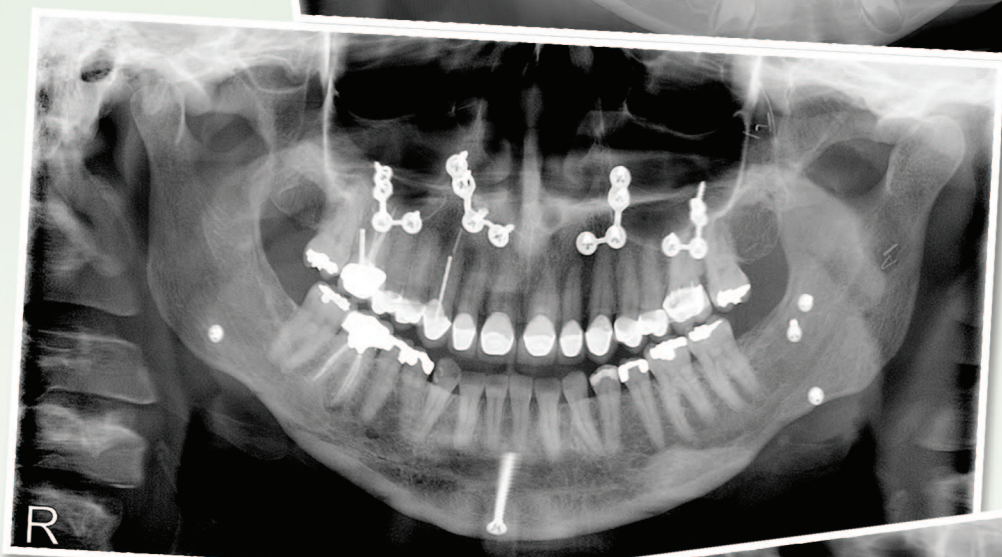
Easy-to-use adjustment guides ensure proper patient positioning on a repeatable basis.



Left: Digital Panoramic taken on a 25-year-old male.



Right: Digital Panoramic taken on a seven-year-old male.



Left: Digital Panoramic taken on a 39-year-old female.



Right: Digital Panoramic taken on a 32-year-old male.



Panoramic Platinum™ Care Package

Encompassing Care Package

With the purchase of any Digital Imaging System from Panoramic, our customers have access to one of the most comprehensive support and service packages in the industry. We call it the Platinum Care Package.

Backed by years of trust and experience, Panoramic stands alone in its commitment to providing you with years of worry-free maintenance and service. Based on valuable feedback from our customers, we have developed our Platinum Care Package to encompass all the valuable support options that you need, when you need them most.



Live Phone Support

Available from 8am-6pm EST, Panoramic's Inside Support team, located in Fort Wayne, Indiana is available to extend live service support. Whether you have questions regarding user operation, patient positioning techniques, software support or basic troubleshooting, we are available to provide live, real-time support without the frustration of automated menus or elongated wait times.



Live Web Support

Utilizing remote access software, Certified Digital Support Technicians "arrive" in your office in a matter of moments to immediately offer troubleshooting tips and solutions to commonly asked questions.



Local Technicians

Equipped with installation and service experience, Panoramic local technicians offer personal attention to assist with equipment questions, challenges and preventative maintenance services.



Software Upgrades

Panoramic includes image acquisition software upgrades to ensure continued compatibility and access to the latest operational versions.



Live Chat

Have questions about your Panoramic equipment or need additional assistance with patient positioning? Visit pancorp.com and click on Live Chat to connect directly with our Support Team eager to assist you!



Focused Product Expertise

Celebrating 25 years of products and services, Panoramic continues to focus exclusively on extraoral radiography for dental practitioners. This expertise offers unique insights and attention to detail, giving the dental community a comprehensive resource for panoramic and cephalometric needs.



User Support Videos

Proper patient positioning is one of the most popular topics for office staff who use our equipment every day and it is important to have access to tools that make this process simple and easy. User videos on pancorp.com are a great visual to train and refresh your team on the easy steps to achieve exceptional panoramic images!



Panoramic Corporation
4321 Goshen Road
Fort Wayne, IN 46818
800-654-2027
www.pancorp.com