

PrograBase 2

The multifunctional software for your Programat®

Supported furnaces	Operating Systems	System requirements
Programat P 300 & P300/G2 Programat P 500 & P500/G2 Programat P 700 & P700/G2 Programat EP 3000 & EP 3000/G2 Programat EP 5000 & EP 5000/G2 Programat CS Programat S1	Windows XP (incl. Microsoft .NET Framework 2.0* and Service-pack 2) Windows Vista Windows 7	Screen Resolution: 1024 x 768 Colours min. 256 RAM min. 256MB CPU: 1 GHz Min. 11 MB free storage Internet access

Installation

The installation starts automatically once the CD is placed into the drive. Follow the instructions of the installation assistant.

PrograBase 2 may also be used without a ceramic furnace being connected to the PC. For data transfer and virtual operation, please connect the ceramic furnace with your computer (USB download cable is part of the furnace delivery form).

Program start

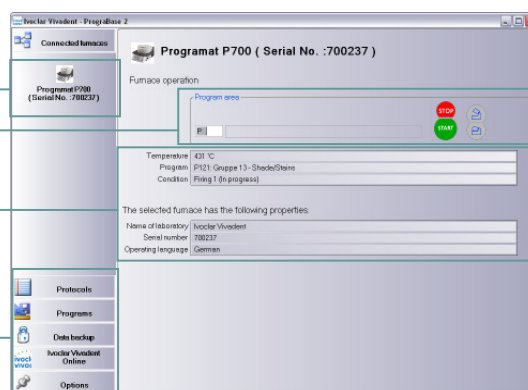
Start PrograBase 2 via the Start menu of your computer once the installation has been completed.

Select a ceramic furnace

Virtual remote control

Program information

Navigation bar to select the function

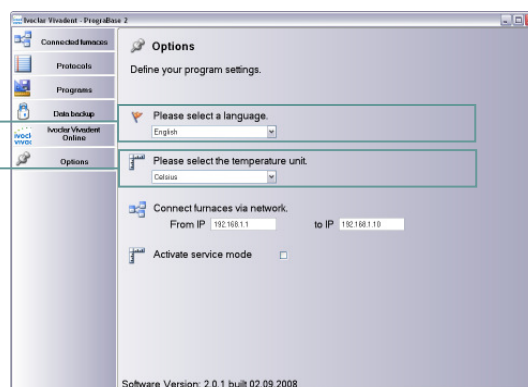


Settings

With the "Options" button, the program settings can be defined.

Select your language from German, English, French, Spanish, Portuguese, or Italian

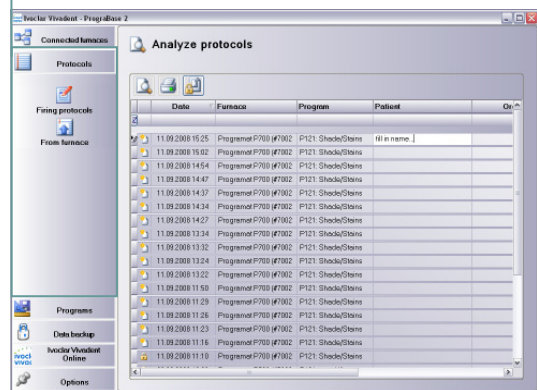
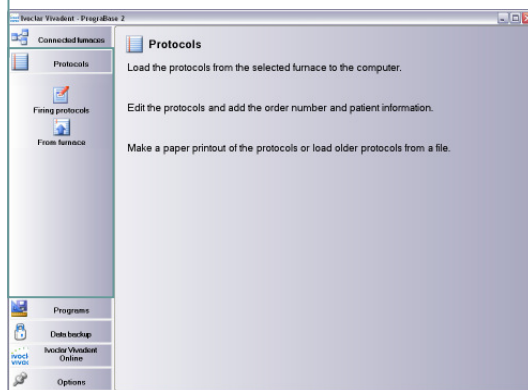
Set the desired temperature mode (Celsius or Fahrenheit)



*) If Microsoft .NET Framework 2.0 is not available on your computer, it will be installed together with the software.
Required free storage space about 300 MB.

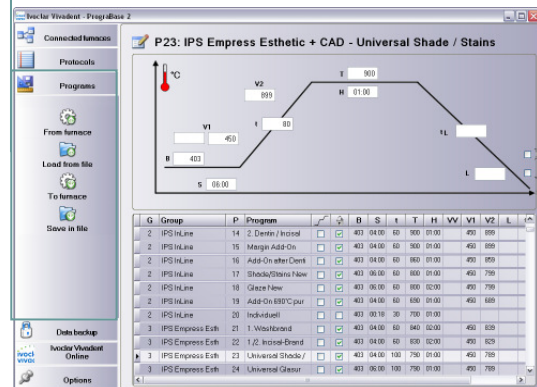
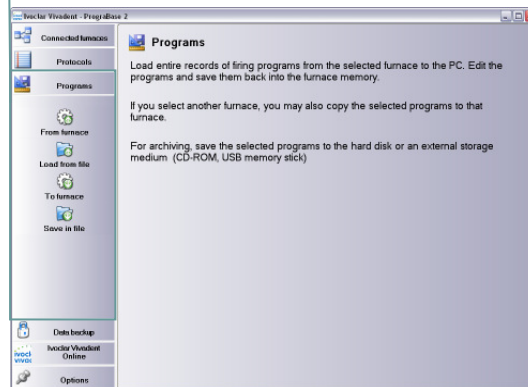
„Protocols“ function

Loading, editing, and managing of firing protocols



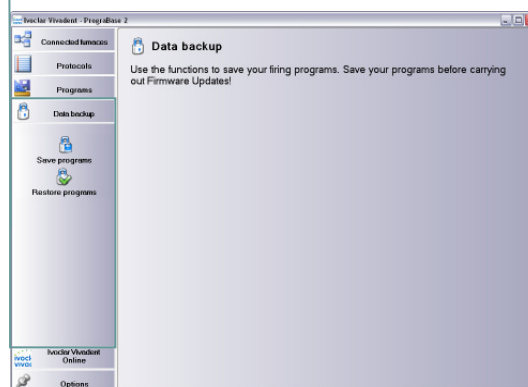
„Programs“ function

Loading, editing, and managing of firing programs



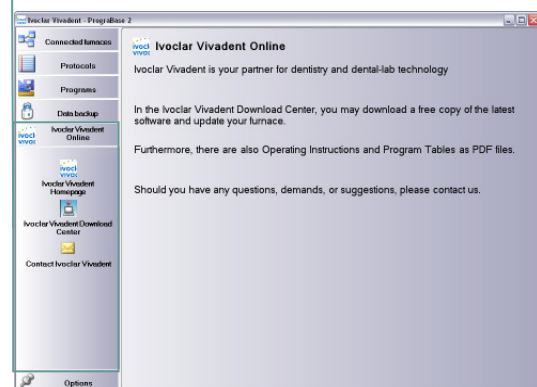
„Save“ function

Saving of all program parameters at a click of the mouse



„Ivoclar Vivadent Online“ function

Connection with the homepage of the manufacturer at a click of the mouse



Ivoclar Vivadent AG
Bendererstr. 2
FL-9494 Schaan
Principality of Liechtenstein
Phone +423 / 235 3535
Fax +423 / 235 33 60
www.ivoclarvivadent.com

Serviceline:
Tel. +423 / 235 36 36

