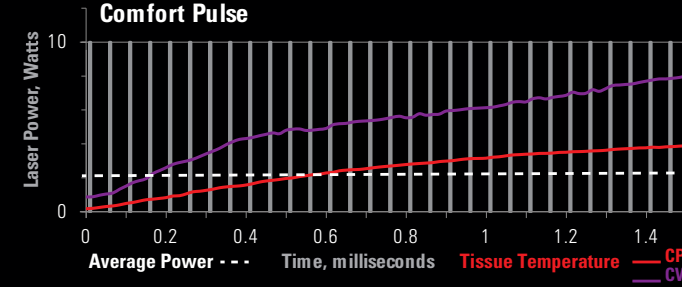


10  
Watts



#### EPIC PATIENT COMFORT

With peak power of 10 watts, EPIC™ can handle many types of procedures – but it also enables EPIC patient comfort with BIOLASE-exclusive ComfortPulse mode, which generates micropulses of laser energy as fast as one-ten-millionths of a second. What does that mean? Shorter, more powerful pulses, and additional time for tissue to relax. Now your patients can enjoy EPIC comfort.

#### EPIC FREEDOM

EPIC™ delivers unmatched power *and* portability – up to 10 Watts of peak power driven by a high-quality lithium ion battery pack. You can move EPIC™ between operatories, with no power cords or footswitch cables to worry about, resulting in a safer, less cluttered working environment.

#### EPIC PAIN THERAPY

EPIC™ is cleared by the U.S. FDA for Pain Therapy, a North America exclusive for dental diode lasers. Using a deluxe, fully engineered Deep Tissue Handpiece (DTHP) to control important parameters such as spot size and power intensity, you have EPIC capabilities for temporary relief of minor pain.

#### WHY MAKE BIOLASE YOUR TECHNOLOGY PARTNER

**25 Years of Experience** bringing advanced dental technology to practices

**Premier Technology Portfolio** made by us or carefully selected from the world's best

**A Unique Biological Approach** that's in synch with today's patient expectations

**Complete Technology Integration** –systems, software, training, and upgrade paths

**A Single Source** to simplify your technology implementation and integration

### FROM DIAGNOSIS TO TREATMENT DELIVERY ALL-TISSUE AND DIODE LASERS | 3D CONE BEAM | 3D DIGITAL SCANNING



**Dual-Wavelength WaterLase iPlus™ All-tissue Laser**  
Breaking the Speed Barrier with Fastest Cutting, Quickest Learning Curve, and Ultimate Payback for Common & Advanced Procedures



**3Shape TRIOS™**  
Intra-oral 3D Scanning Made Fast, Easy and Accurate.



**iLase™ 940 Diode Laser**  
The First Totally Wireless Diode Laser for Soft Tissue Surgery and Hygiene\*



**NewTom™ VGi**  
True Medical Grade Imaging Technology at a Fraction of the Cost and Radiation Exposure



**TRAINING & CERTIFICATION** Comprehensive classroom and online training by experienced diode laser dentists is available through BIOLASE in collaboration with the WCLI, the world's largest dental technology education organization.

We designed our practice integration programs to help you and your staff more easily operate and apply BIOLASE technology to keep you on track to success. Thank you for choosing BIOLASE as your technology partner!

#### BIOLASE

**USA**  
BIOLASE, Inc.  
4 Cromwell  
Irvine, CA 92618  
949.361.1200

**Europe**  
© 2014 MT Promedtt Consulting GmbH  
Altenhofstrasse 80  
D-66386 St. Ingbert/Germany  
+49 6894581020  
www.mt-procons.com

**Worldwide**  
Floss, Germany  
Madrid, Spain  
Shanghai, China  
Mumbai, India  
Rio de Janeiro, Brazil

biolase.com  
Toll-free 888.424.6527  
NASDAQ: BIOL

©BIOLASE, Inc. All rights reserved. BIOLASE, WaterLase, EPIC, ComfortPulse, EZTips, and Deep Tissue Handpiece are trademarks of Biolase in the US and other countries. For sale by or on the order of a licensed dental or medical professional only. Consult user manual before use.



## SOFT TISSUE, WHITENING AND PAIN THERAPY

#### EPIC VERSATILITY

With quick access to 20 presets using a streamlined touch screen interface– EPIC™ is an incredibly versatile device with epic potential for expanded treatments – including exclusive Pain Therapy mode and Whitening mode.



#### EASY DISPOSABLE TIPS

EPIC™ offers the widest selection of tips for any diode, giving you more precise control of tissue cutting for different procedures and tissue types. EPIC™ single use tips are bendable, disposable and convenient, offering less risk for cross-contamination.

Conveniently order EPIC™ tips online at [BIOLASEstore.com](http://BIOLASEstore.com)!



#### EPIC WHITENING

EPIC™ is an ideal teeth-whitening solution for progressive offices wanting to expand their cosmetic treatment menu. Studies have shown that EPIC™ can perform a full-mouth, in-office whitening procedure with an average of 4-6 shades in only 20 minutes of treatment time (not including set-up or take-down), faster than any other in-office whitening system.\*

\*Results may vary by patient.

epic™



# EPIC TECHNOLOGY FOR EPIC CLINICAL VERSATILITY

### UNMATCHED COMBINATION OF POWER & PORTABILITY

- Up to 10 watts of power with “wireless” convenience
- Built-in battery pack delivers full day of procedures “unplugged”
- Other portable diodes lack the power

### BEST CONTROL OF TISSUE CUTTING FOR DIFFERENT PROCEDURES AND TISSUE BIOTYPES

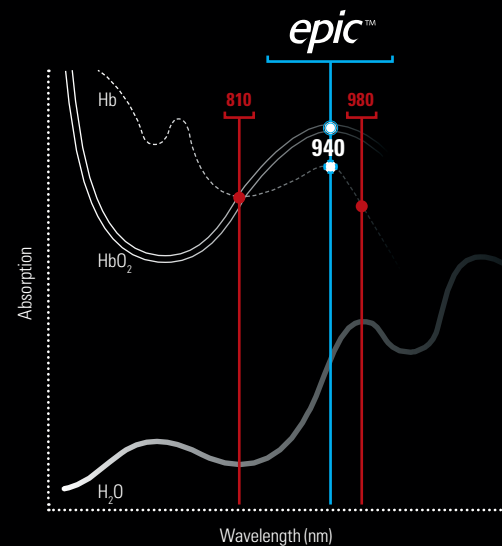
- Widest selection of tip lengths and diameters
- Bendable tips for easy access to hard to reach areas
- Single-use disposable tips for quick, convenient treatment
- Disposable tips enhance patient safety

### OUTSTANDING PATIENT COMFORT & CONVENIENCE

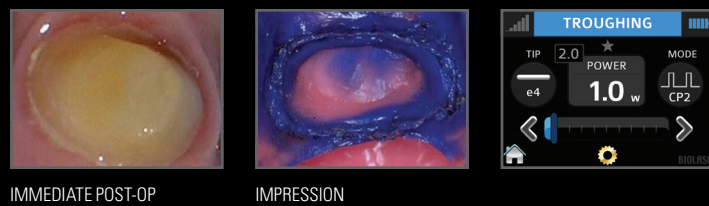
- Exclusive ComfortPulse™ settings help you better balance cutting speed and patient comfort
- Most procedures can be performed without local anesthetic.

### 940 nm WAVELENGTH

- Developed exclusively for dentistry by BIOLASE
- Better absorbed by hemoglobin and oxyhemoglobin than other wavelengths (see graph below)
- Cuts efficiently at lower power and with less heat



## GINGIVECTOMY



## TROUGHING FOR IMPRESSIONS



## PERIO POCKET



## FRENECTOMY



## EXCISION

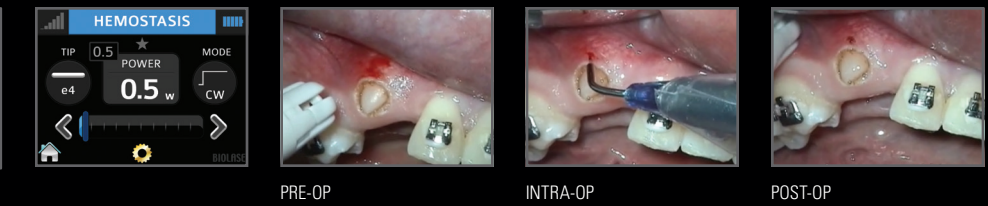


## APHTHOUS ULCER

# THE TOTAL DIODE, ELEVATED.



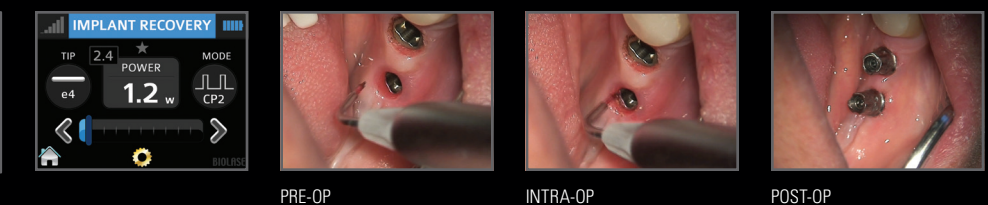
## HEMOSTASIS



## EXPOSURE



## IMPLANT RECOVERY



## CROWN LENGTHENING



## WHITENING



## PAIN THERAPY



### EPIC 10 TECHNICAL SPECIFICATIONS

**Laser Classification:** IV  
**Wavelength:** 940 ± 15nm  
**Max Output Power:** 10W  
**Pulse Repetition Rate:** Capable of 50 KHz  
**Power Modes:** Continuous Wave (CW)  
ComfortPulse 0: 10µsec ON / 40µsec OFF  
ComfortPulse 1: 100µsec ON / 200µsec OFF  
ComfortPulse 2: 1msec ON / 1msec OFF  
Pulsed: 20 msec ON / 20 msec OFF  
**Aiming Beam:** Laser Diode, max 1mW, 635nm  
**Fiber Cable Length:** 6ft (1.83m)  
**Dimensions:** 4.4in x 5.7in x 6.5in  
(11.18cm x 14.48cm x 16.51cm)  
**Weight:** 2.5lb (1.13kg)

