

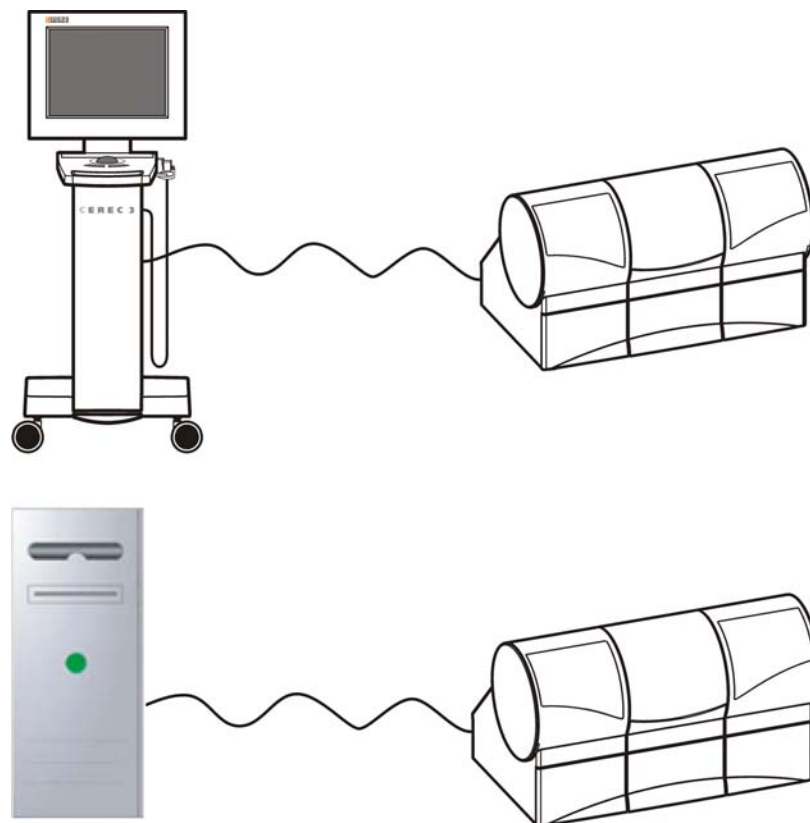
New as of:

09.2010

CEREC / inLab MC XL

Operating the MC XL via LAN

English



Contents

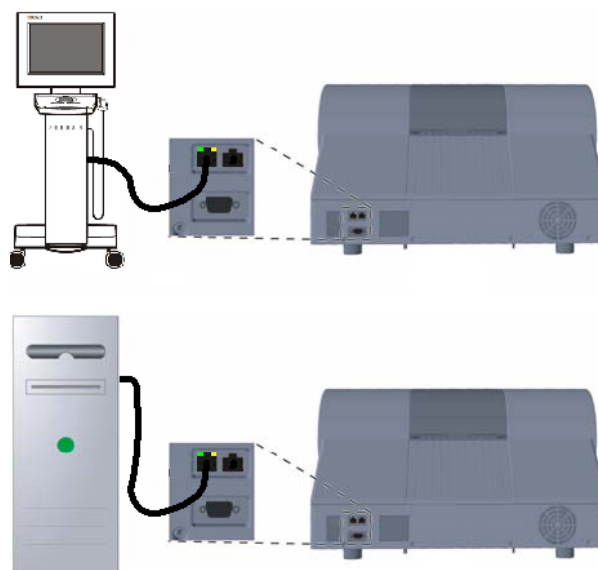
1	Preparations	3
2	Windows 7	4
2.1	Deactivating the WLAN card	4
2.2	Configuring the network properties of the LAN card	4
2.3	Connection test via ping command (Windows 7)	8
3	Windows Vista	10
3.1	Deactivating the WLAN card	10
3.2	Configuring the network properties of the LAN card	11
3.3	Connection test via ping command (Windows Vista)	15
4	Windows XP	17
4.1	Deactivating the WLAN_card	17
4.2	Configuring the network properties of the LAN card	17
4.3	Connection test via ping command (Windows XP)	20

1 Preparations

In the following text, the acquisition unit and the InLab system PC are both referred to as "PC".

The milling unit is connected directly to the PC via a network cable.

- ✓ The PC and the milling unit are switched off.
- 1. Connect the PC to the milling unit with a crossover network cable. Use the lower socket of the acquisition unit for this purpose. The cable (Part No. 60 06 626) is supplied with the milling unit.



LAN connection of the PC to the milling unit. Top: Acquisition unit; Bottom: In-Lab PC

- 2. Switch the PC and the milling unit on.

HW status Gx or higher

The PC is prepared for installation ex works. The LAN card does not have to be configured.

If these settings are changed, you can restore the default status (factory settings) using these instructions.

Hardware status under Gx:

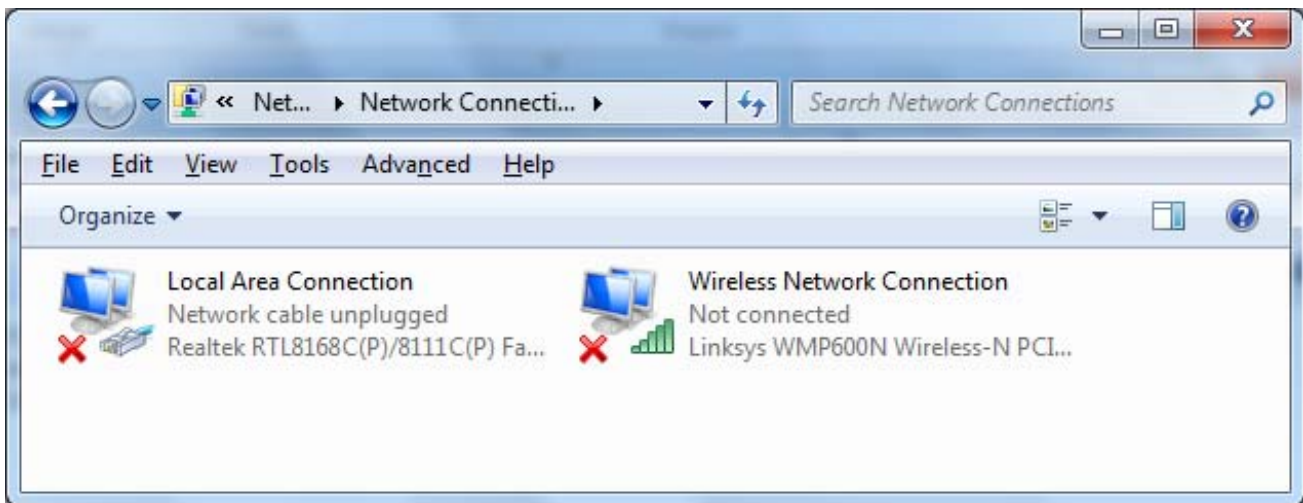
Configure the LAN card as described in these instructions.

2 Windows 7

2.1 Deactivating the WLAN card

Opening network connections

1. Click *"Start" / "Control panel"* in the task bar.
2. In the *"Control panel"* window, click the *"View network status and tasks"* button in the *"Network and Internet"* group.
3. In the *"Network and Sharing Center"* window, click *"Change adapter settings"* in the left bar.
↳ The window with the network connections then opens.



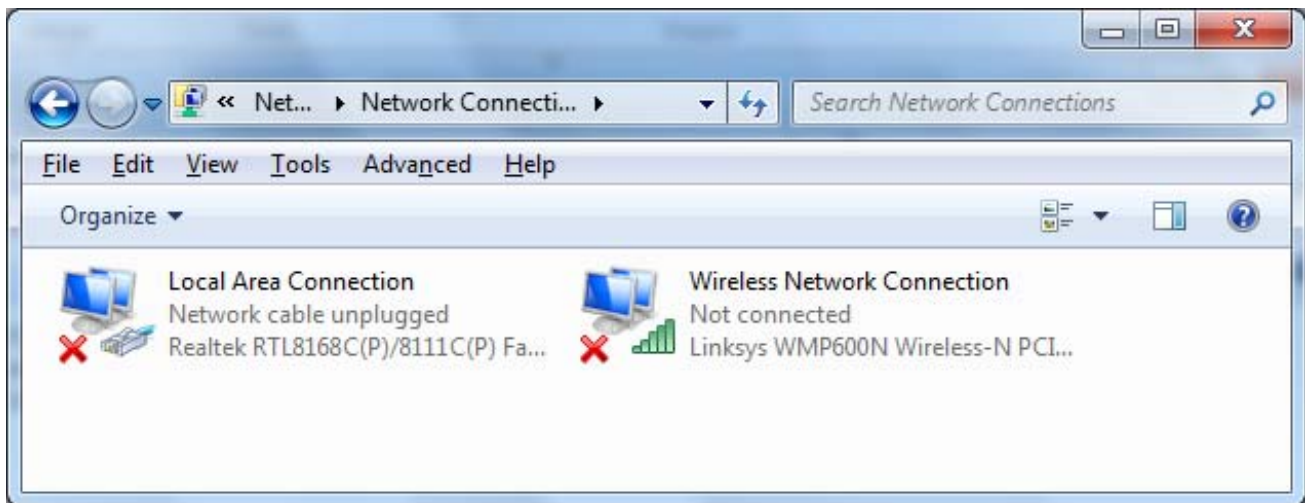
Deactivating the WLAN card

1. Right-click *"Wireless Network Connection"* with the device name *"Linksys WMP600N..."*.
2. Select *"deactivate"*.

2.2 Configuring the network properties of the LAN card

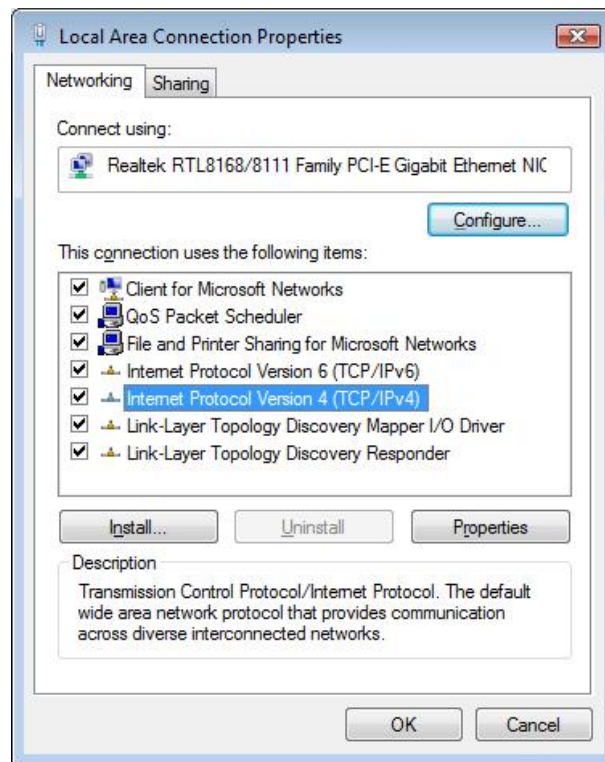
Opening network connections

1. Click *"Start" / "Control panel"* in the task bar.
2. In the *"Control panel"* window, click the *"View network status and tasks"* button in the *"Network and Internet"* group.
3. In the *"Network and Sharing Center"* window, click *"Change adapter settings"* in the left bar.
↳ The window with the network connections then opens.

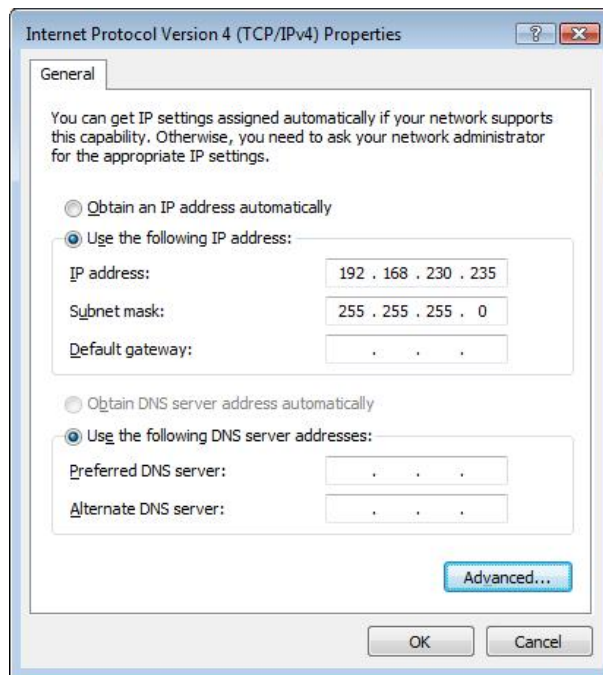


Configuring the network properties of the LAN card

1. Right-click "*Local Area Connection*" and select the command "*Properties*".
↳ The window with the Network Properties then opens.

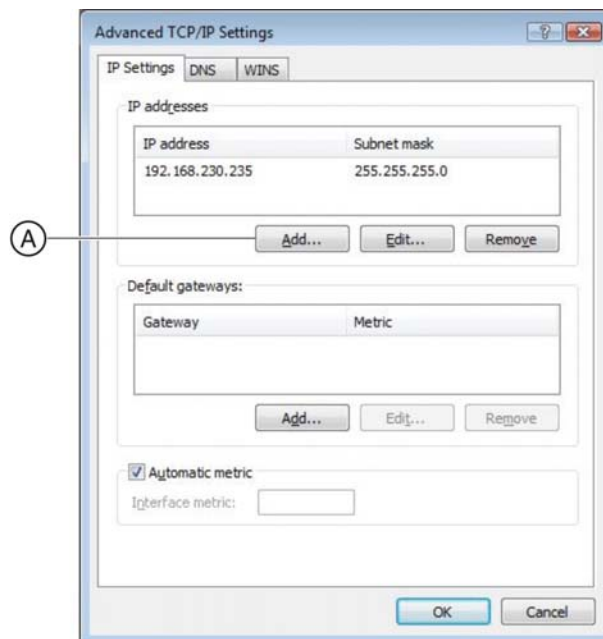


2. Double-click "*Internet Protocol Version 4 (TCP/IPv4)*".
↳ The window with the TCP/IPv4 settings then appears.



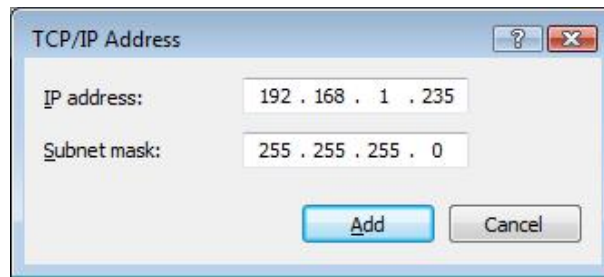
3. Change these settings as shown in the screenshot and confirm with the "Advanced" button.

↳ The window for advanced settings appears.



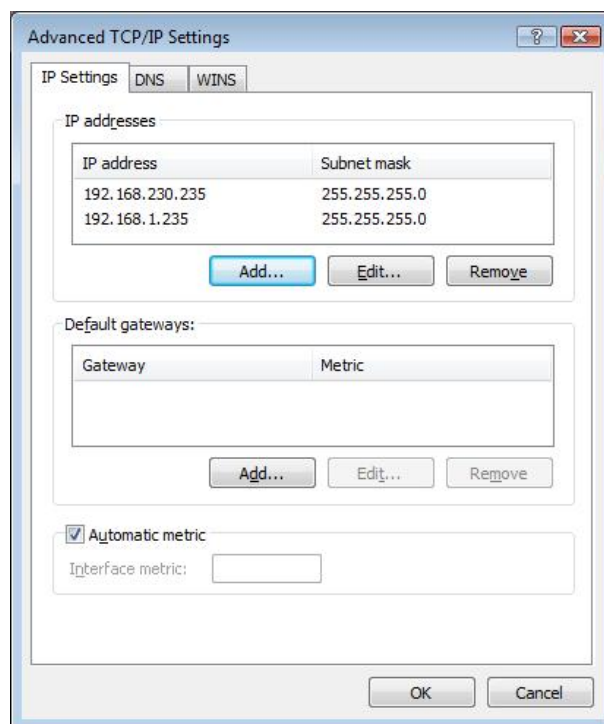
4. Click the "Add"(A) button.

➤ The following window appears.



5. Change these settings as shown in the screenshot and confirm with the "Add" button.

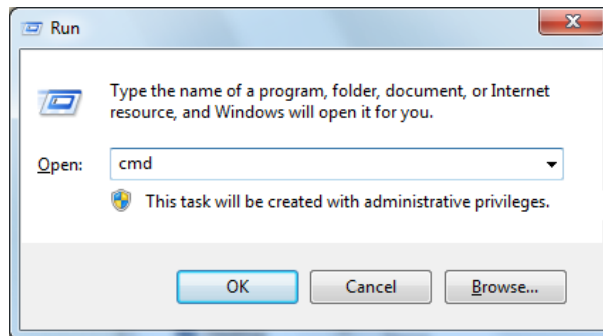
➤ The following window appears.



6. Confirm this window with "OK".
7. Confirm each of the two open windows with "OK".
➤ The LAN card is configured.

2.3 Connection test via ping command (Windows 7)

1. Click *"Start"/ "Run"* in the task bar.



2. Enter *"cmd"* in the following window.
3. Confirm with *"OK"*.
 - ↳ The DOS prompt window then opens.

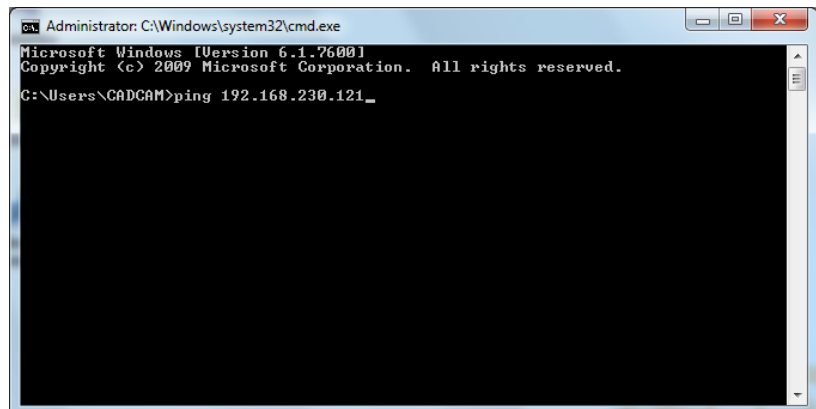
NOTICE

The IP address is only an example

The IP address in the next screenshot is only an example.

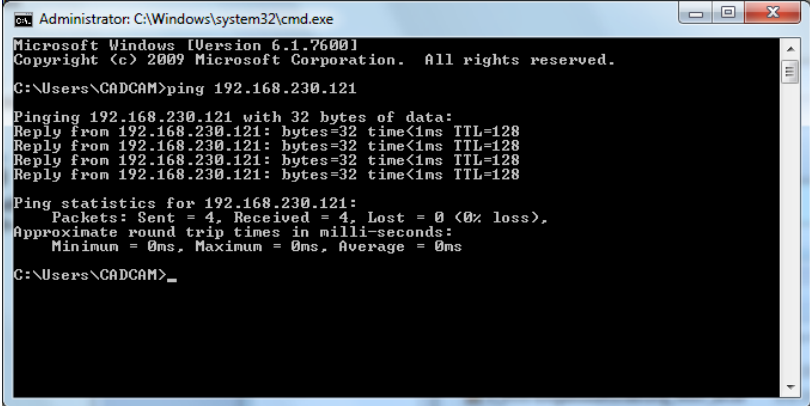
The IP address of the milling unit appears on the milling unit display when, after turning the unit on, you press the *"Config"* key.

4. Enter the command *"ping"*, followed by a space and the IP address of the milling unit.



5. Press the Enter key.

- ➡ If the connection is intact, the display should have the following contents.



```
Administrator: C:\Windows\system32\cmd.exe
Microsoft Windows [Version 6.1.7600.1]
Copyright (c) 2009 Microsoft Corporation. All rights reserved.

C:\Users\CADCAM>ping 192.168.230.121

Pinging 192.168.230.121 with 32 bytes of data:
Reply from 192.168.230.121: bytes=32 time<1ms TTL=128
Reply from 192.168.230.121: bytes=32 time<1ms TTL=128
Reply from 192.168.230.121: bytes=32 time<1ms TTL=128
Reply from 192.168.230.121: bytes=32 time<1ms TTL=128

Ping statistics for 192.168.230.121:
    Packets: Sent = 4, Received = 4, Lost = 0 (0% loss),
    Approximate round trip times in milli-seconds:
        Minimum = 0ms, Maximum = 0ms, Average = 0ms

C:\Users\CADCAM>
```

6. Close the DOS prompt window.

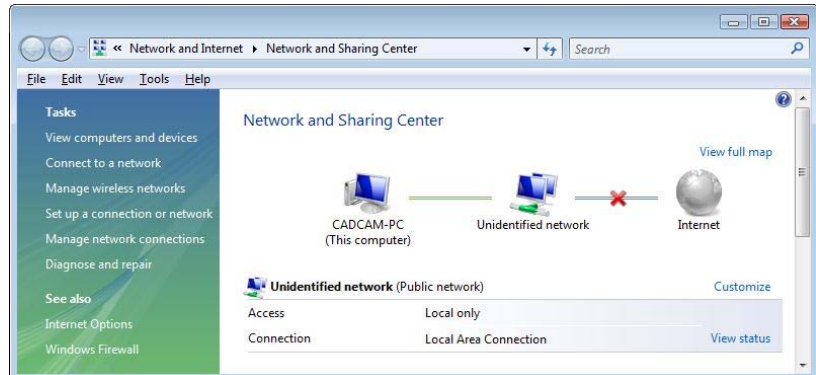
3 Windows Vista

3.1 Deactivating the WLAN card

Opening network connections



1. Right-click the network icon in the task bar and select *"Network and Sharing Center"*.



2. In the *"Network and Sharing Center"* window, click *"Manage network connections"*.
→ The window with the network connections then opens.



Deactivating the WLAN card

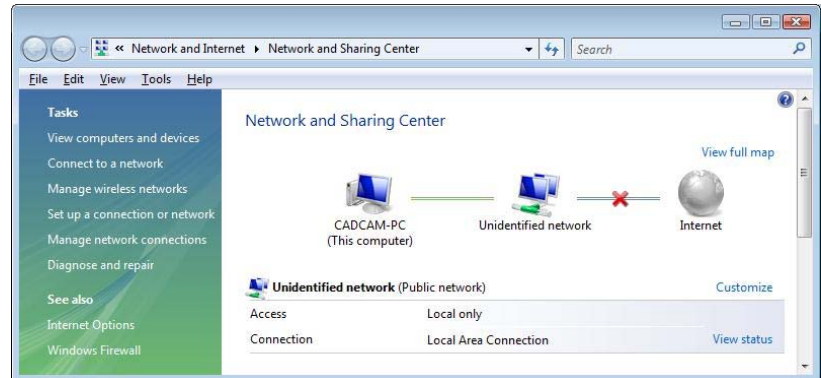
1. Right-click *"Wireless Network Connection"*.
2. Select *"deactivate"*.

3.2 Configuring the network properties of the LAN card

Opening network connections



1. Right-click the network icon in the task bar and select *"Network and Sharing Center"*.



2. In the *"Network and Sharing Center"* window, click *"Manage network connections"*.

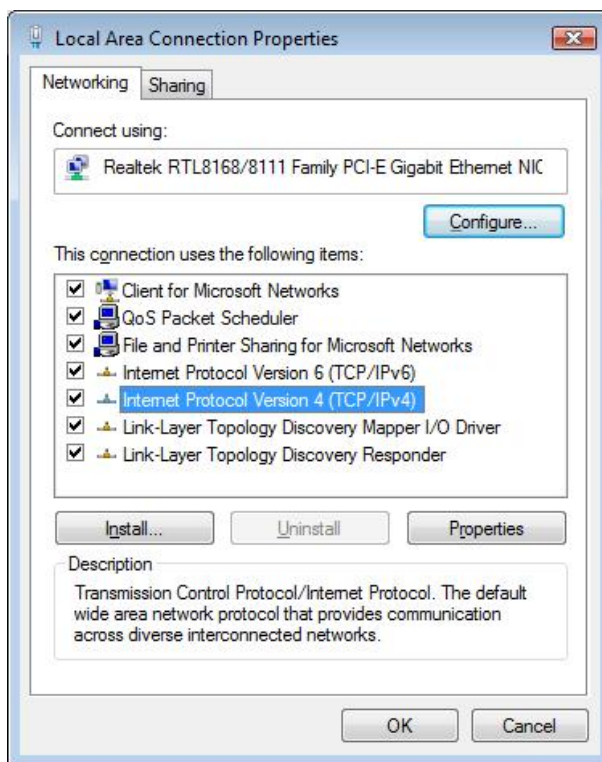
↳ The window with the network connections then opens.



Configuring the network properties of the LAN card

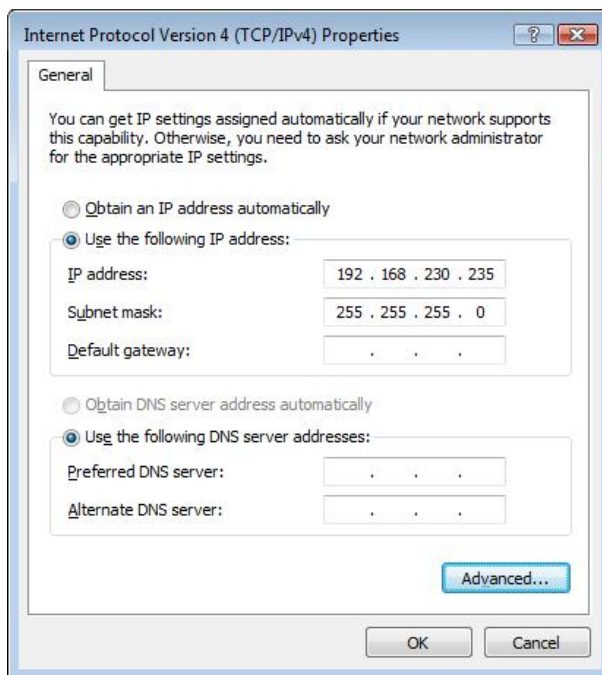
1. Right-click *"Local Area Connection"* and select the command *"Properties"*.

↳ The window with the Network Properties then opens.



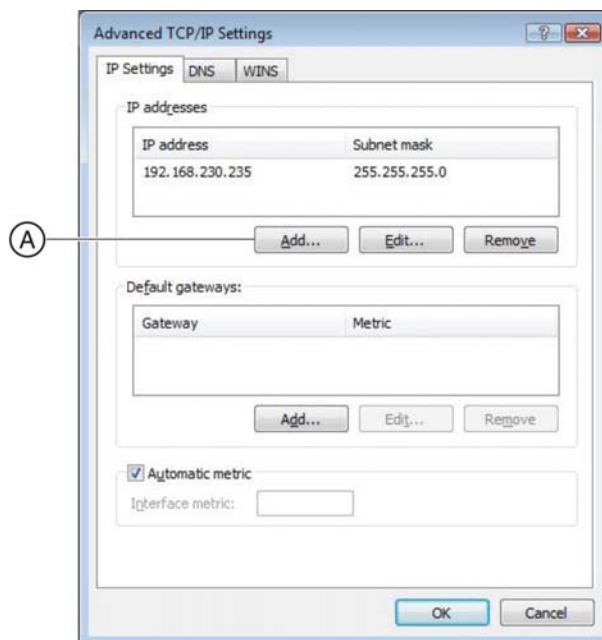
2. Double-click *"Internet Protocol Version 4 (TCP/IPv4)"*.

↳ The window with the TCP/IPv4 settings then appears.

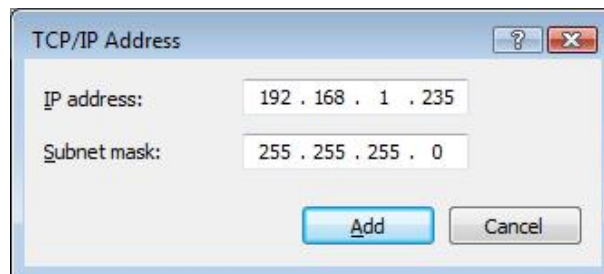


3. Change these settings as shown in the screenshot and confirm with the *"Advanced"* button.

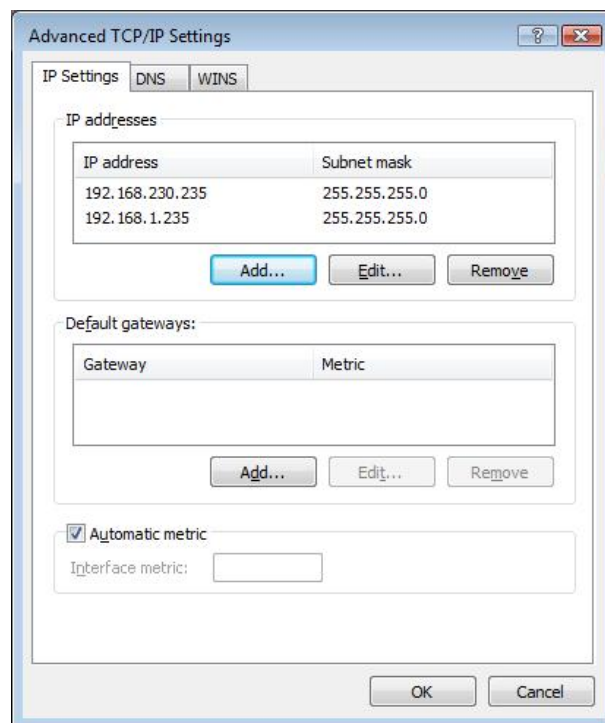
↳ The window for advanced settings appears.



- Click the "Add"(A) button.
↳ The following window appears.



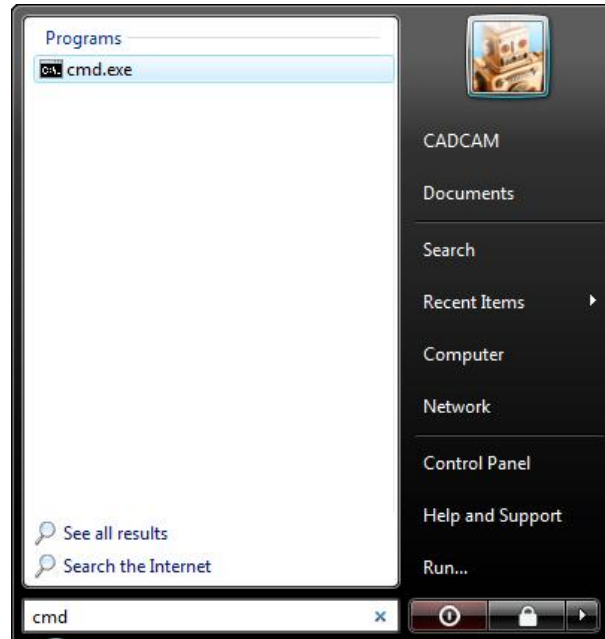
- Change these settings as shown in the screenshot and confirm with the "Add" button.
↳ The following window appears.



6. Confirm this window with "OK".
 7. Confirm each of the two open windows with "OK".
- The LAN card is configured.

3.3 Connection test via ping command (Windows Vista)

1. Click *"Start"* in the task bar and enter the command *"cmd"*.



2. Confirm with the *"Enter"* key.
↳ The DOS prompt window then opens.

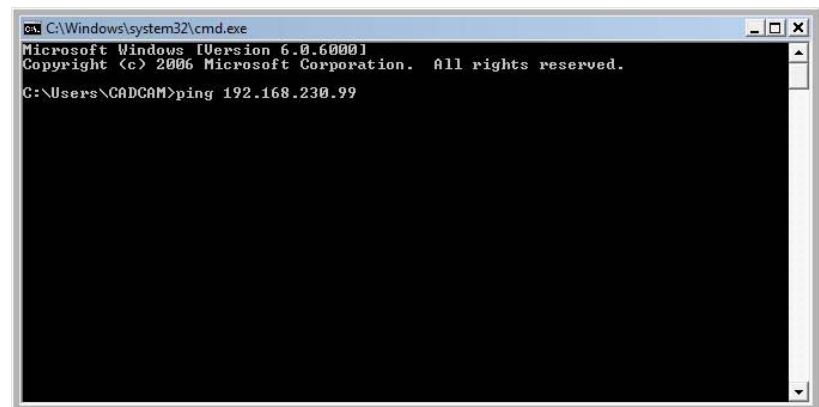
NOTICE

The IP address is only an example

The IP address in the next screenshot is only an example.

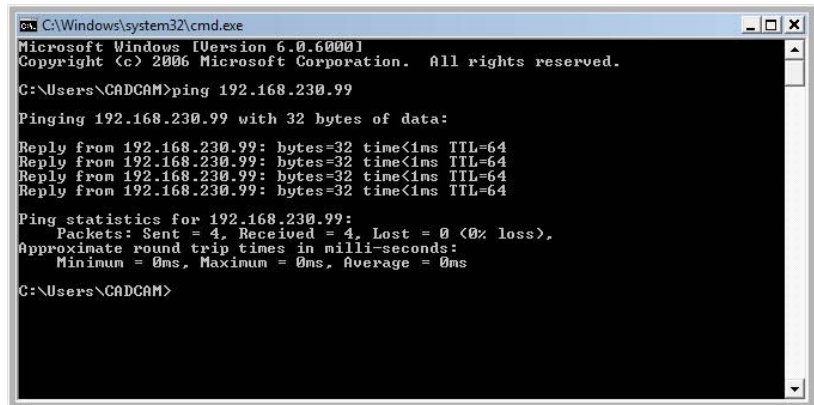
The IP address of the milling unit appears on the milling unit display when, after turning the unit on, you press the *"Config"* key.

3. Enter the command *"ping"*, followed by a space and the IP address of the milling unit.



4. Press the Enter key.

- ☞ If the connection is intact, the display should have the following contents.



```
C:\Windows\system32\cmd.exe
Microsoft Windows [Version 6.0.6000]
Copyright (c) 2006 Microsoft Corporation. All rights reserved.

C:\Users\CADCAM>ping 192.168.230.99

Pinging 192.168.230.99 with 32 bytes of data:
Reply from 192.168.230.99: bytes=32 time<1ms TTL=64
Reply from 192.168.230.99: bytes=32 time<1ms TTL=64
Reply from 192.168.230.99: bytes=32 time<1ms TTL=64
Reply from 192.168.230.99: bytes=32 time<1ms TTL=64

Ping statistics for 192.168.230.99:
    Packets: Sent = 4, Received = 4, Lost = 0 (0% loss),
    Approximate round trip times in milli-seconds:
        Minimum = 0ms, Maximum = 0ms, Average = 0ms

C:\Users\CADCAM>
```

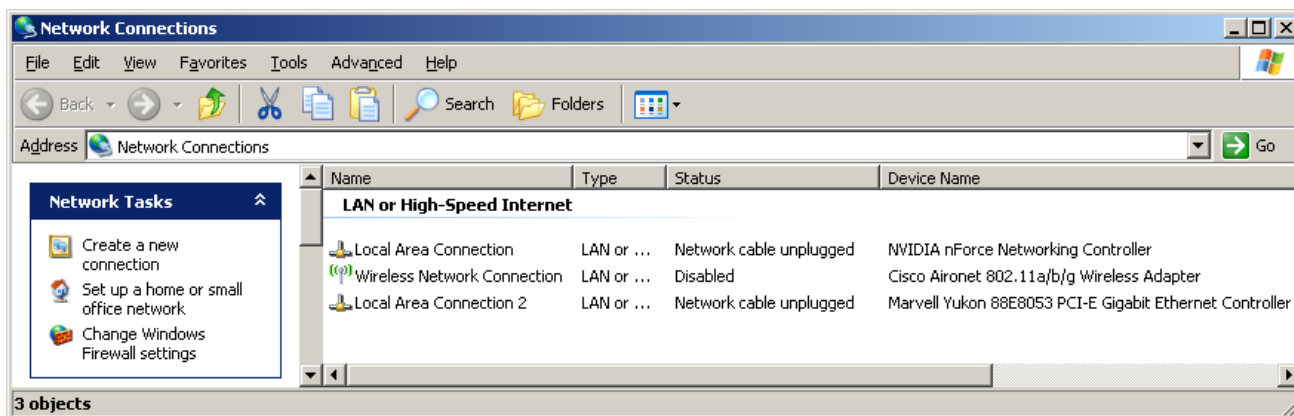
5. Close the DOS prompt window.

4 Windows XP

4.1 Deactivating the WLAN_card

Opening network connections

1. Click *"Start" / "Settings" / "Control panel"* in the task bar.
2. Double-click the *"Network Connections"* icon in the *"Control panel"* window.



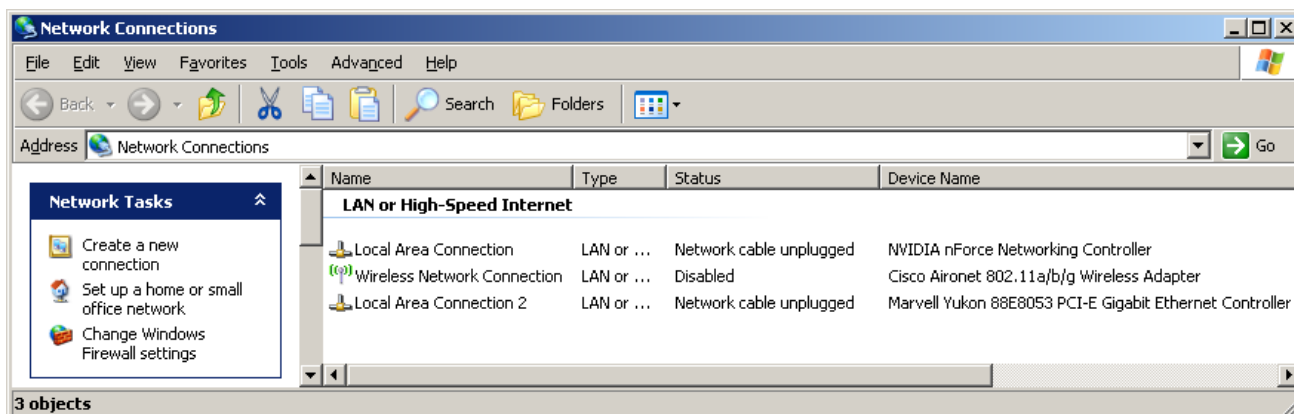
Deactivating the WLAN card

1. Click the *"Wireless Network Connection"* with the device name **Cisco Aironet 02.11a/b/g Wireless Adapter** or **... Wireless-G PCI ...** with the right mouse button.
2. Select *"deactivate"*.

4.2 Configuring the network properties of the LAN card

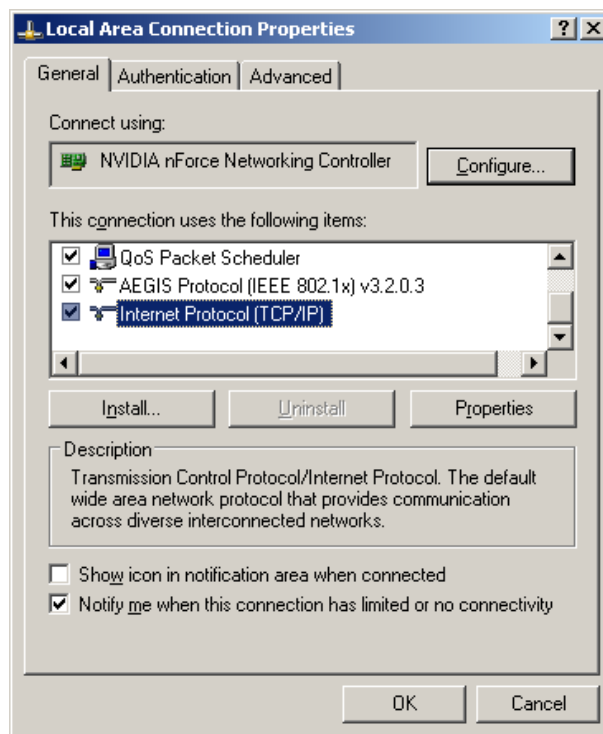
Opening network connections

1. Click *"Start" / "Settings" / "Control panel"* in the task bar.
2. Double-click the *"Network Connections"* icon in the *"Control panel"* window.

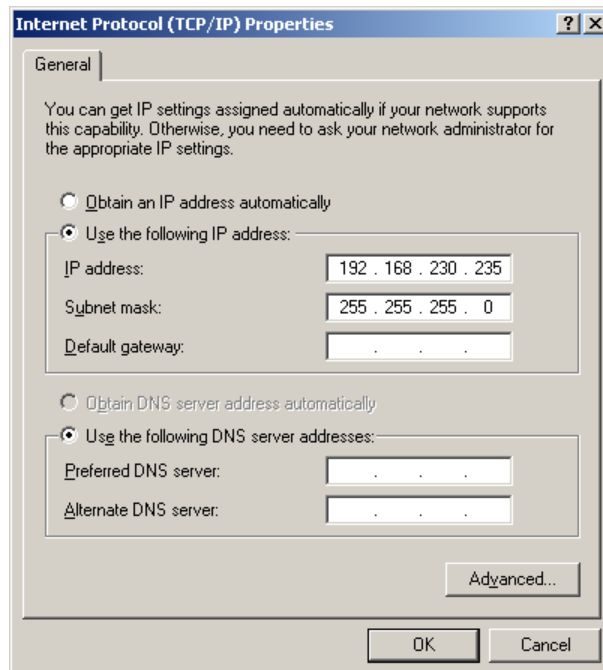


Configuring the network properties of the LAN card

1. Right-click "LAN connection" and select the command *"Properties"*.
 ↳ The window with the Network Properties then opens.

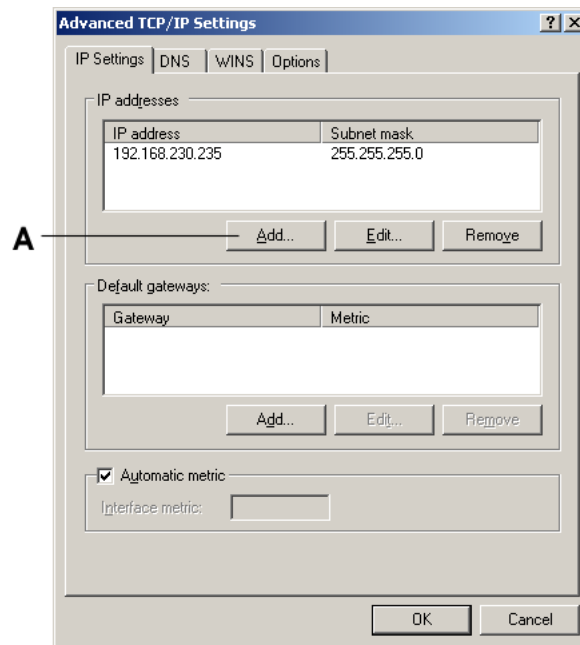


2. Double-click the *"Internet Protocol (TCP/IP)"* window.
 ↳ The window with the TCP/IP settings then appears.



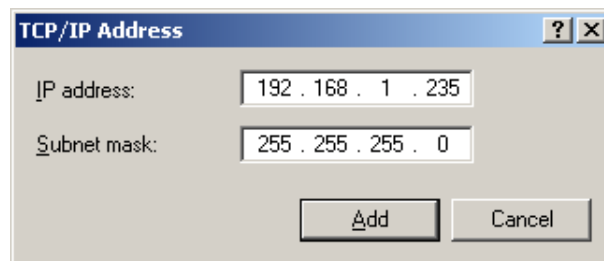
3. Change these settings as shown in the screenshot and confirm with the *"Advanced"* button.

➤ The window for advanced settings appears.



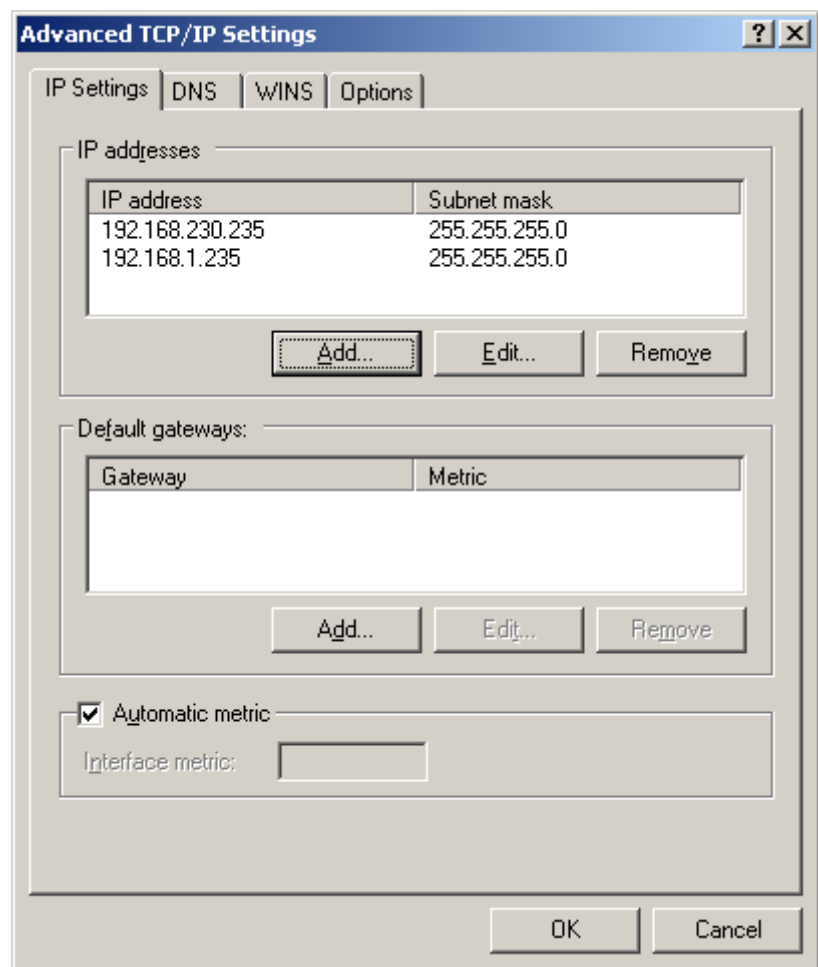
4. Click the "Add"(A) button.

➤ The following window appears.



5. Change these settings as shown in the screenshot and confirm with the "Add" button.

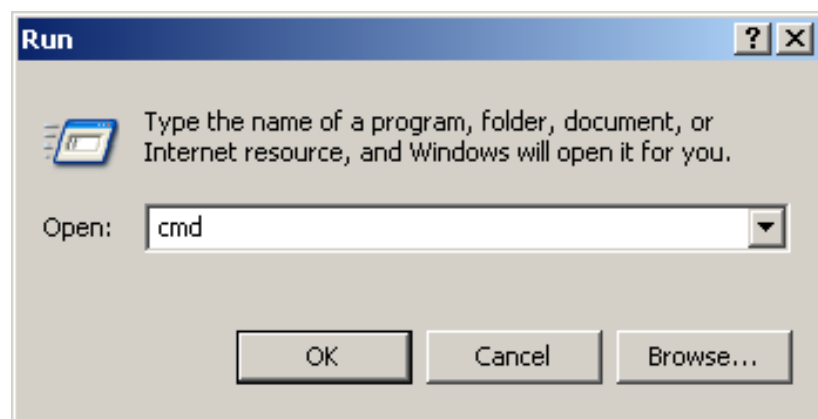
➤ The following window appears.



6. Confirm this window with "OK".
 7. Confirm each of the two open windows with "OK".
- ↳ The LAN card is configured.

4.3 Connection test via ping command (Windows XP)

1. Click "Start"/"Run" in the task bar.



DOS prompt

2. Enter "*cmd*" in the following window.
3. Confirm with "*OK*".
 - ↳ The DOS prompt window then opens.

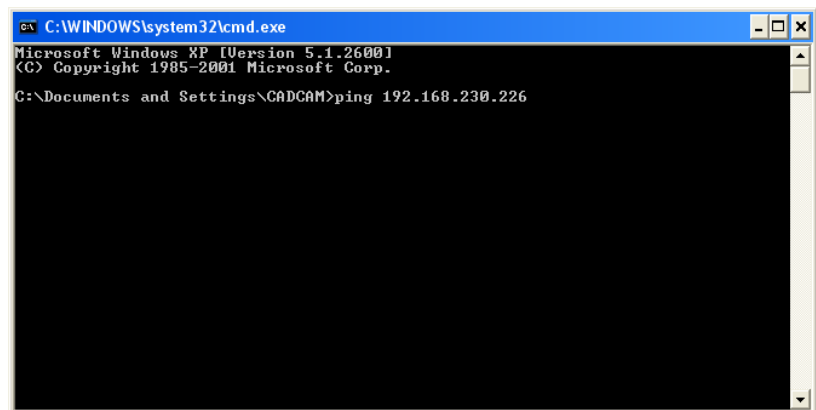
NOTICE

The IP address is only an example

The IP address in the next screenshot is only an example.

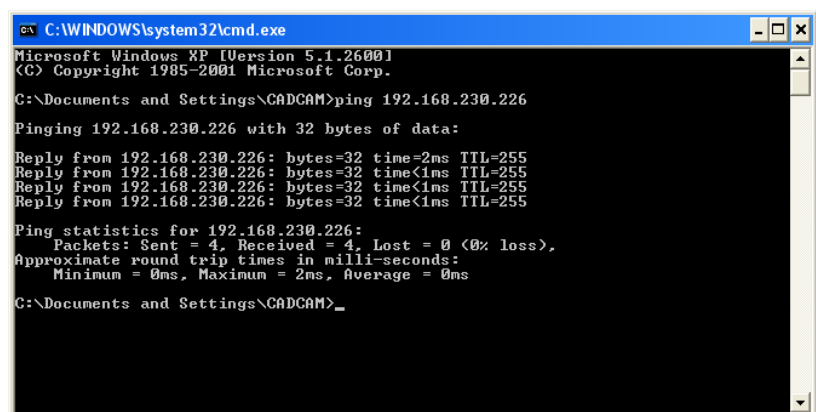
The IP address of the milling unit appears on the milling unit display when, after turning the unit on, you press the "*Config*" key.

4. Enter the command "*ping*", followed by a space and the IP address of the milling unit.



Example ping command

5. Press the Enter key.
 - ↳ If the connection is intact, the display should have the following contents.



6. Close the DOS prompt window.

We reserve the right to make any alterations which may be required due to technical improvements.

© Sirona Dental Systems GmbH 2010
D 3439.031.02.03.02 09.2010

Sprache: englisch
Ä.-Nr.: 113 019

Printed in Germany

Sirona Dental Systems GmbH

in the USA:

Fabrikstraße 31
64625 Bensheim
Germany
www.sirona.com

Sirona Dental Systems LLC
4835 Sirona Drive, Suite 100
Charlotte, NC 28273
USA

Order No

61 90 503 D 3439