

SMART CEM²

SELF-ADHESIVE CEMENT

Technique Guide

- If using the digit® Targeted Delivery System, please begin with the Loading Instructions below for preparing the cartridge, then continue with Step 2 instructions on back side of this card.
- If using the syringe delivery, please open Guide and proceed with Step 1.

digit® Targeted Delivery System – Loading Instructions



1. Syringe Dispenser, Cartridge, Mixing Tip, Intra Oral Tip



2. Break off tab with syringe dispenser pocket.



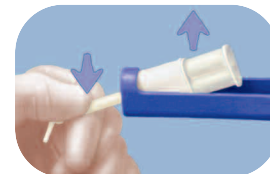
3. Push on mixing tip until it snaps into place.



4. Important: Cartridge spur fits in square hole when assembled.



5. Load cartridge/mixing tip/intra oral tip through side opening. Push forward. Bleed through tip prior to use. Mixing tip bends for greater access.



6. Remove cartridge/mixing tip/intra oral tip through side opening. Push down on mixing tip and lift out.



For Dental Use Only



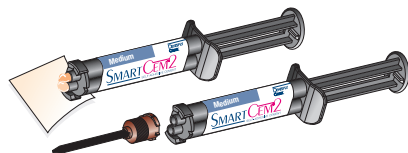
Caution, Consult
Instructions for Use

1-800-LD CAULK (532-2855) / 1-302-422-4511 / 1-800-263-1437 Canada

www.dentsply.com / www.dentsply.de

©2009 DENTSPLY International. All rights reserved. Form #569020 (R 7/7/09)

Technique Guide *Syringe Delivery System*

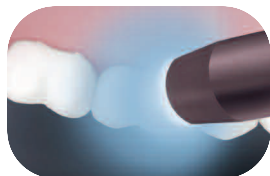


1. Remove the syringe cap, dispense a small amount to get material flowing freely from both ports, and carefully wipe ports clean, avoiding any cross-contamination. Install a mixing tip and gently depress the syringe plunger to start material flow.



3. Immediately seat the restoration in the mouth. Right after applying cement, check for complete seating and perhaps rock the crown gently to insure optimal seating.

There is a gel phase with SmartCem™2 Cement. It starts after about 1-2 minutes and lasts about 1 minute. Gel phase can also be achieved with a curing light applied around the margins for less than 10 seconds. Gel phase lasts about 45 seconds after the brief light curing.



5. Restoration is stabilized by light curing the margins for 20-40 seconds. For light transmissible restorations, final set is achieved by light curing buccal, lingual and occlusal for 10 seconds each. For restorations that are not light transmissible (e.g. metallic restorations) final set is achieved by allowing SmartCem™2 Cement to self-cure 6 minutes from start of mix.



2. Gently apply a thin uniform layer of SmartCem™2 Cement to the entire internal surface of the restoration. For direct intraoral placements, the mixing tip can be bent for improved access. SmartCem™2 Cement offers up to 2 minutes of working time.



4. Floss interproximally only in the direction of the restoration seating and then complete excess removal during the gel phase for easy cleanup. Protect restoration from movement during gel phase cleanup through final set.

SMART CEM™2 Procedure Chart

	Self-Cure	Dual Cure – Non-Light Transmissible Restorations	Light Cure – Light Transmissible Restorations
TYPE OF RESTORATION	All	PFM, Zirconia, Alumina, opaque ceramics & composites	Translucent ceramics & composites
1. FILL AND SEAT CROWN Work time extraoral from start of mix:	up to 2 min	up to 2 min	up to 2 min
Protect restoration from movement during gel phase cleanup through final set			
2. REMOVE EXCESS Gel stage initiation from seating: Gel Duration:	1-2 min 1 min	up to 10 sec light cure 45 sec	up to 10 sec light cure 45 sec
3. STABILIZE	Constant occlusal pressure	Light cure margins 20-40 sec	Light cure margins 20-40 sec
4. FINAL SET	6 min from start of mix	6 min from start of mix	Upon completion of light curing each surface* 10 sec <i>*Buccal, Lingual and Occlusal</i>

Technique Tips

- Tooth preparation should leave the tooth surface moist, evenly glistening with moisture. Dry preparations (air-dried or alcohol-dried), and wet preparations (with pooled surface water), can reduce adhesion.
- Stabilize restorations (e.g. with a finger) during gel phase cleanup.
- Remove floss horizontally through interproximals during cleanup.
- Cement at the margins may appear set before cement within the restoration is set. Do not move, torque or disturb restoration until final set of the cement (6 minutes from the start of mix or in the case of light-transmissible restorations completion of light curing).
- Stabilize restorations with occlusal pressure while the patient waits the full 6 minutes from start of mix.